



## **Technical Specifications**

### **Lighting**

#### **Lighting Booth:**

- Open booth located house center

#### **Lighting Console:**

- ETC Ion Xe 20 Lighting Console

#### **Lighting Positions:**

- (3) Permanent Electrics onstage
- (1) Permanent Electric Front of House

#### **Lighting Instruments:**

- (20) ETC Source Four LED Series 2 Lustr 26°
- (10) ETC ColorSource Spot with Fresnel lens
- (10) ETC ColorSource Cyc

### **Sound**

#### **House Mix Position:**

- Located house center
- Approximately 65'-0" from front lip of stage

#### **Audio Console:**

- Yamaha TF5, paired with 2x "Tio1608-D" (16in, 8 out) digital snake units
  - 33 faders, with customizable layer
  - 40 mono inputs
  - 2 stereo inputs
  - 2 FX sends/returns
  - 8 mono aux sends
  - 6 stereo aux sends (one is configured for permanent stage monitoring)
  - 4 matrix sends (configured for Dressing Room, Assisted Listening, and Stereo Recording)
  - 8 DCAs

**Playback:**

- Tascam CD-01U CD Player
- HDMI [Video and Audio]
- 1/8" "headphone jack-style" cable
- USB thumb drive Playback [Direct through Yamaha TF5 console]
- USB Cable Playback [Direct through Yamaha TF5 console]

**Main PA:**

- JBL Line Array
  - (6) VRX932LA [main] & amp
  - (2) VRX918s subwoofer

**Monitors:**

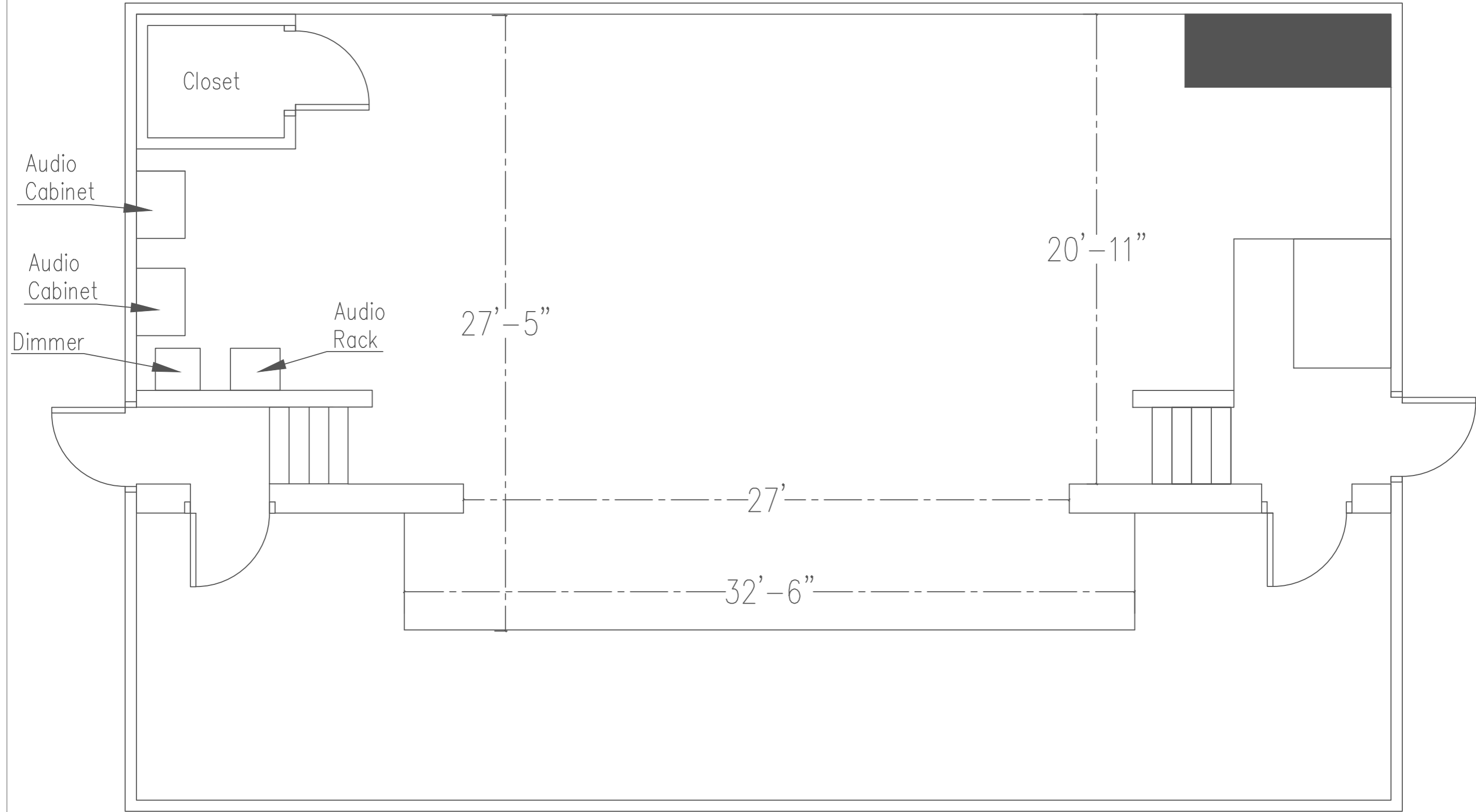
- (2) JBL Control 29 (mounted permanently in wings)
- (8) JBL EON610 – powered, 10" wedge monitor
- (2) Mackie SRM150 – powered, compact monitor

**Microphones:**

- (4) AKG CHM99 Hanging Cardioid Condenser
- (12) Shure ULXD1 Digital Wireless Body pack
  - (12) Countryman H6 Omnidirectional Headset for Shure
  - (4) Countryman B3 Lavalier for Shure (beige and black)
- (8) Shure ULXD2 Digital Wireless Handheld
- (6) Shure SM58 Handheld Dynamic Vocal Wired Handheld
- (2) Shure SM58S Vocal Microphone with On/Off Switch Wired Handheld
- (2) Shure MX415LP/C Gooseneck Microphone




**Projection**

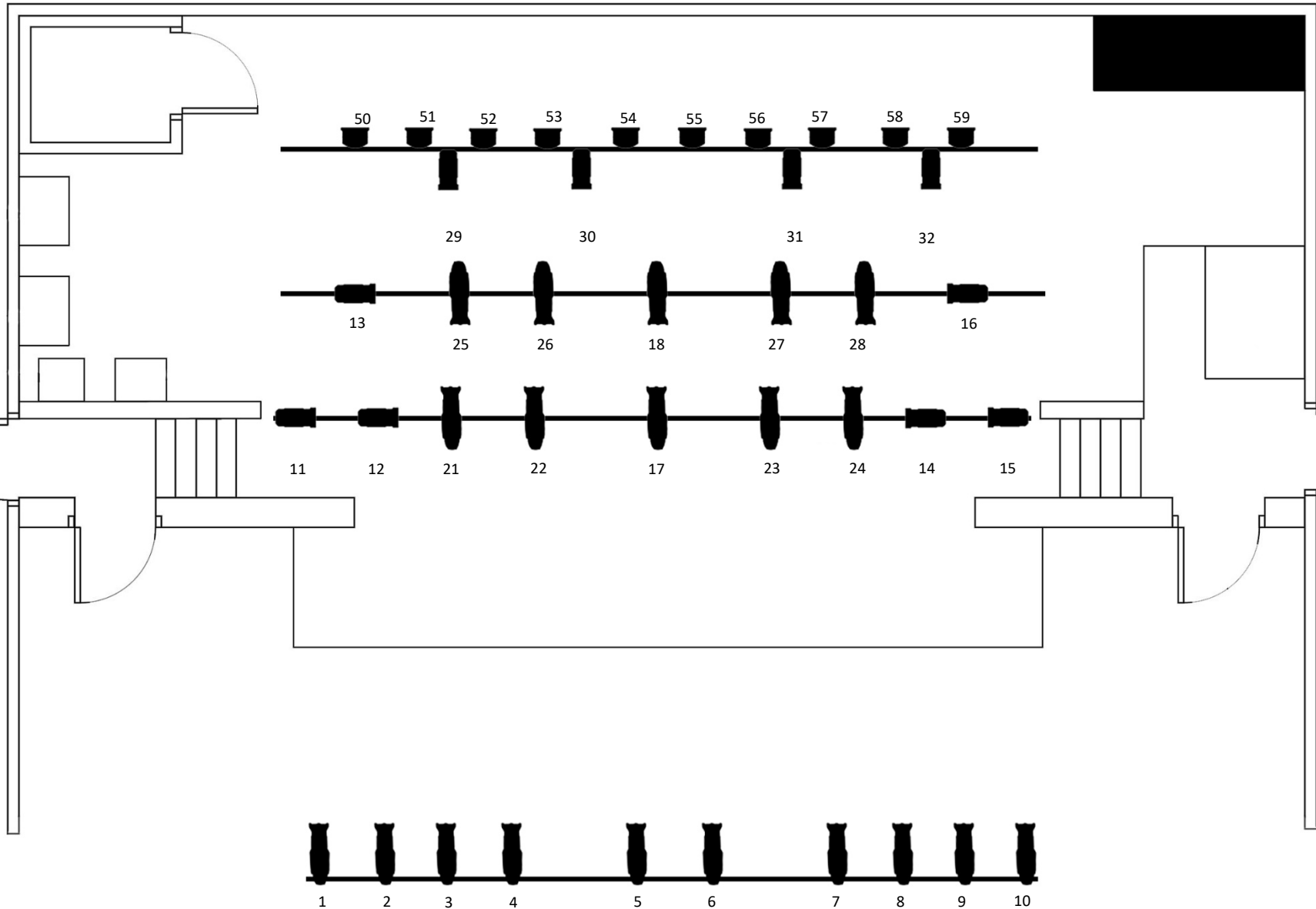
- PowerLite Pro G6050W WXGA 3LCD Projector
  - 5500 Lumen
  - Zoom Lens Long Throw
- HDMI connection



\*\*Measurements do not include curtains

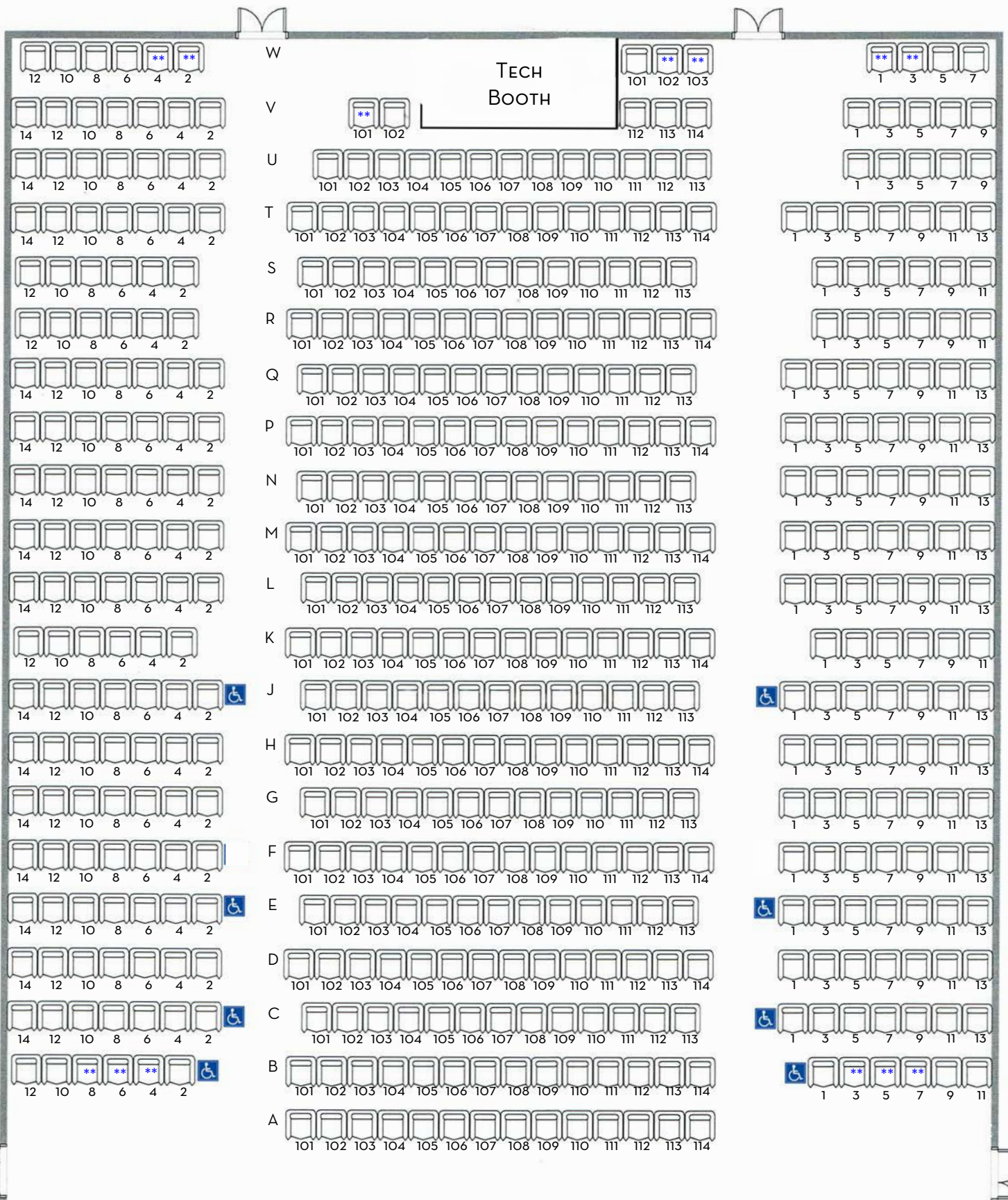
**Legend**

-  ETC Source Four Lustr 2
-  ETC ColorSource Spot w/Fresnel lens
-  ETC ColorSource CYC




\*\*Drawing not to scale

Fixture #	Instrument Type	Pipe Location	Purpose	Patch Address
1	ETC Source 4 Lustr2	Front of House	Front light	1.1
2	ETC Source 4 Lustr2	Front of House	Front light	1.10
3	ETC Source 4 Lustr2	Front of House	Front light	1.19
4	ETC Source 4 Lustr2	Front of House	Front light	1.28
5	ETC Source 4 Lustr2	Front of House	Front light	1.37
6	ETC Source 4 Lustr2	Front of House	Front light	1.46
7	ETC Source 4 Lustr2	Front of House	Front light	1.55
8	ETC Source 4 Lustr2	Front of House	Front light	1.64
9	ETC Source 4 Lustr2	Front of House	Front light	1.73
10	ETC Source 4 Lustr2	Front of House	Front light	1.82
11	ETC ColorSource V	Pipe 1	Side light	1.91
12	ETC ColorSource V	Pipe 1	Side light	1.100
13	ETC ColorSource V	Pipe 2	Side light	1.109
14	ETC ColorSource V	Pipe 1	Side light	1.118
15	ETC ColorSource V	Pipe 1	Side light	1.127
16	ETC ColorSource V	Pipe 2	Side light	1.136
17	ETC Source 4 Lustr2	Pipe 1	Down light	1.145
18	ETC Source 4 Lustr2	Pipe 2	Down light	1.154
19	EMPTY	EMPTY	EMPTY	10.1
20	EMPTY	EMPTY	EMPTY	EMPTY
21	ETC Source 4 Lustr2	Pipe 1	Down light	1.1.63
22	ETC Source 4 Lustr2	Pipe 1	Down light	1.181
23	ETC Source 4 Lustr2	Pipe 1	Down light	1.190
24	ETC Source 4 Lustr2	Pipe 1	Down light	1.208
25	ETC Source 4 Lustr2	Pipe 2	Down light	1.217
26	ETC Source 4 Lustr2	Pipe 2	Down light	1.235
27	ETC Source 4 Lustr2	Pipe 2	Down light	1.244
28	ETC Source 4 Lustr2	Pipe 2	Down light	1.254
29	ETC ColorSource V	Pipe 3	Back light	1.172
30	ETC ColorSource V	Pipe 3	Back light	1.226
31	ETC ColorSource V	Pipe 3	Back light	1.199
32	ETC ColorSource V	Pipe 3	Back light	1.263
33	EMPTY	EMPTY	EMPTY	10.1
34	EMPTY	EMPTY	EMPTY	10.2
35	EMPTY	EMPTY	EMPTY	10.3
36	EMPTY	EMPTY	EMPTY	10.4
37	EMPTY	EMPTY	EMPTY	10.5
38	EMPTY	EMPTY	EMPTY	10.6
39	EMPTY	EMPTY	EMPTY	10.7
40	EMPTY	EMPTY	EMPTY	EMPTY
41	EMPTY	EMPTY	EMPTY	EMPTY
42	EMPTY	EMPTY	EMPTY	EMPTY
43	EMPTY	EMPTY	EMPTY	EMPTY
44	EMPTY	EMPTY	EMPTY	EMPTY
45	EMPTY	EMPTY	EMPTY	EMPTY
46	EMPTY	EMPTY	EMPTY	EMPTY
47	EMPTY	EMPTY	EMPTY	EMPTY
48	EMPTY	EMPTY	EMPTY	EMPTY
49	EMPTY	EMPTY	EMPTY	EMPTY
50	ETC ColorSource CYC	Pipe 3	Cyc light	1.271
51	ETC ColorSource CYC	Pipe 3	Cyc light	1.280
52	ETC ColorSource CYC	Pipe 3	Cyc light	1.289
53	ETC ColorSource CYC	Pipe 3	Cyc light	1.298
54	ETC ColorSource CYC	Pipe 3	Cyc light	1.307
55	ETC ColorSource CYC	Pipe 3	Cyc light	1.316
56	ETC ColorSource CYC	Pipe 3	Cyc light	1.325
57	ETC ColorSource CYC	Pipe 3	Cyc light	1.334
58	ETC ColorSource CYC	Pipe 3	Cyc light	1.343
59	ETC ColorSource CYC	Pipe 3	Cyc light	1.352
60	EMPTY	EMPTY	EMPTY	1.500
61	EMPTY	EMPTY	EMPTY	1.501
62	EMPTY	EMPTY	EMPTY	1.502
63	EMPTY	EMPTY	EMPTY	1.503
100	Color Source Relay	Front of House	Power Relay	1.371



\*\* DENOTES REMOVABLE SEATS FOR WHEELCHAIRS. USER ORGANIZATION MUST NOTIFY NEWHALL FAMILY THEATRE STAFF 48 HOURS PRIOR TO EVENT FOR SEATS TO BE REMOVED.

 DENOTES TRANSFER SEATS; OUTER ARMREST OPENS TO ALLOW EASIER TRANSFER TO THEATER SEAT.

STAGE